

# Vizi Wash Z19



Light Efficiency:

31 Lumen/Watt

Light Quality:

CRI: 68.5

Color Temperature:

6885 K

Output: 2601 lm

Peak: 7868 cd

Power: 84.2 W

PF: 0.99



Beam Angle

33.9°

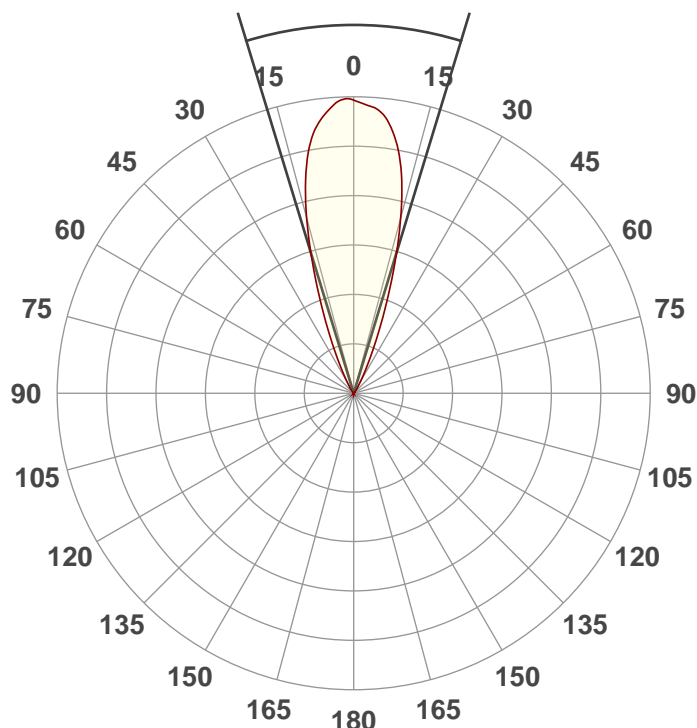
Test:

Zoom Out White

Date:

8/29/2019

Note:



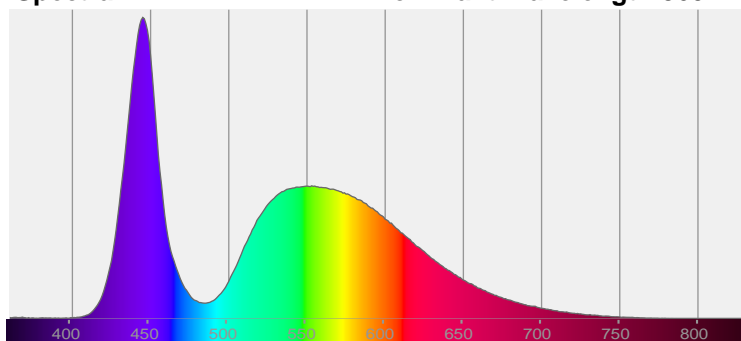
CIE 1931

x: 0.309

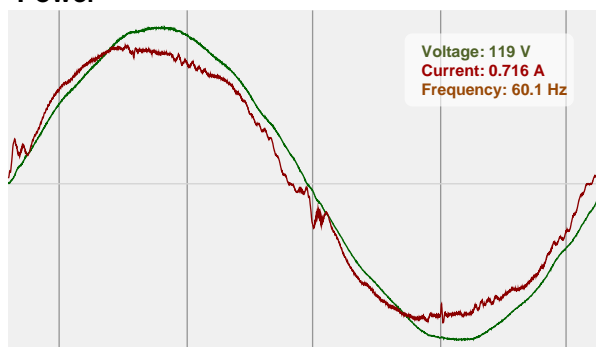
y: 0.312

Spectra

Dominant Wavelength: 360nm

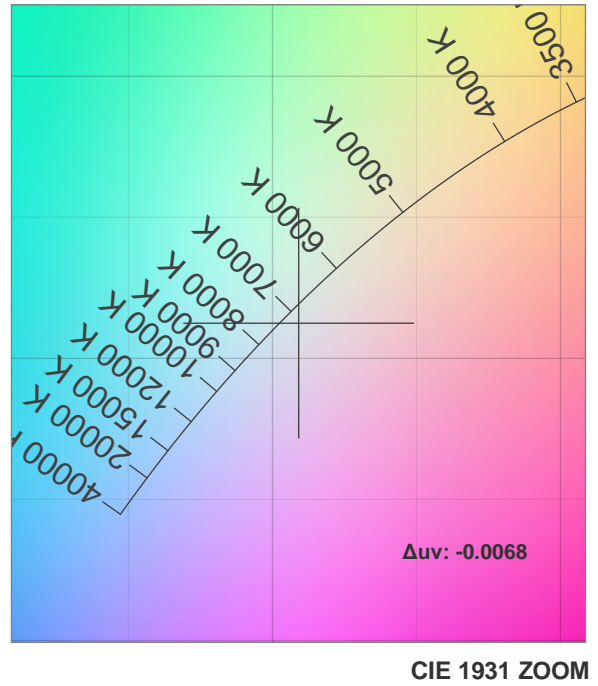
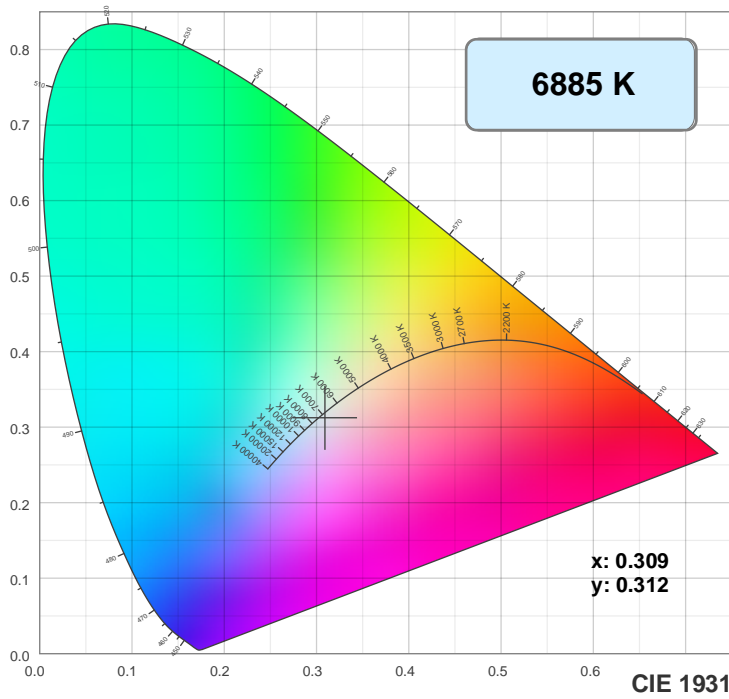


Power

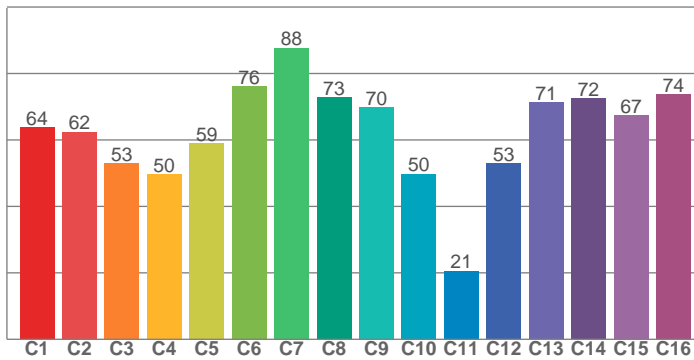


Voltage: 119 V  
Current: 0.716 A  
Frequency: 60.1 Hz

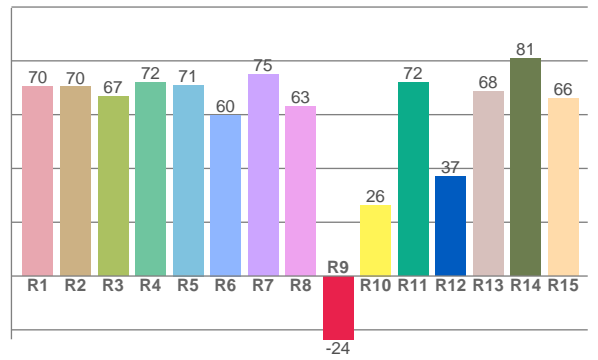
## Color Details



TM30: 62.0



CRI: 68.5 (R1-R8)



CRI R values, only R1-R8 are used to calculate final CRI value

R1	R2	R3	R4	R5	R6	R7	R8	R9	R10	R11	R12	R13	R14	R15
70.3	70.3	66.7	72.0	71.0	59.9	74.9	62.9	-23.5	26.4	71.9	37.1	68.5	80.8	66.0

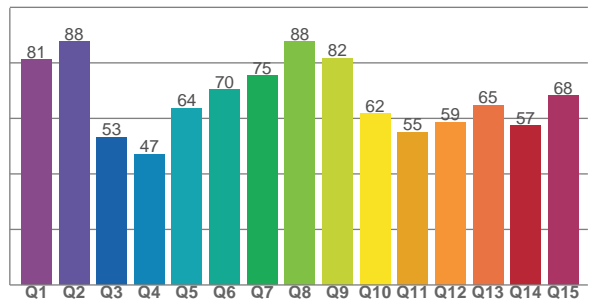
TM30 C values, 16 binned values out of total of 99 C values

C1	C2	C3	C4	C5	C6	C7	C8	C9	C10	C11	C12	C13	C14	C15	C16
63.7	62.5	52.9	49.6	59.0	76.1	87.6	72.8	69.8	49.8	20.6	52.9	71.2	72.5	67.3	73.7

CQS Q values

Q1	Q2	Q3	Q4	Q5	Q6	Q7	Q8	Q9	Q10	Q11	Q12	Q13	Q14	Q15
81.3	87.6	53.3	47.1	63.6	70.3	75.3	87.7	81.6	61.7	55.1	58.6	64.8	57.5	68.2

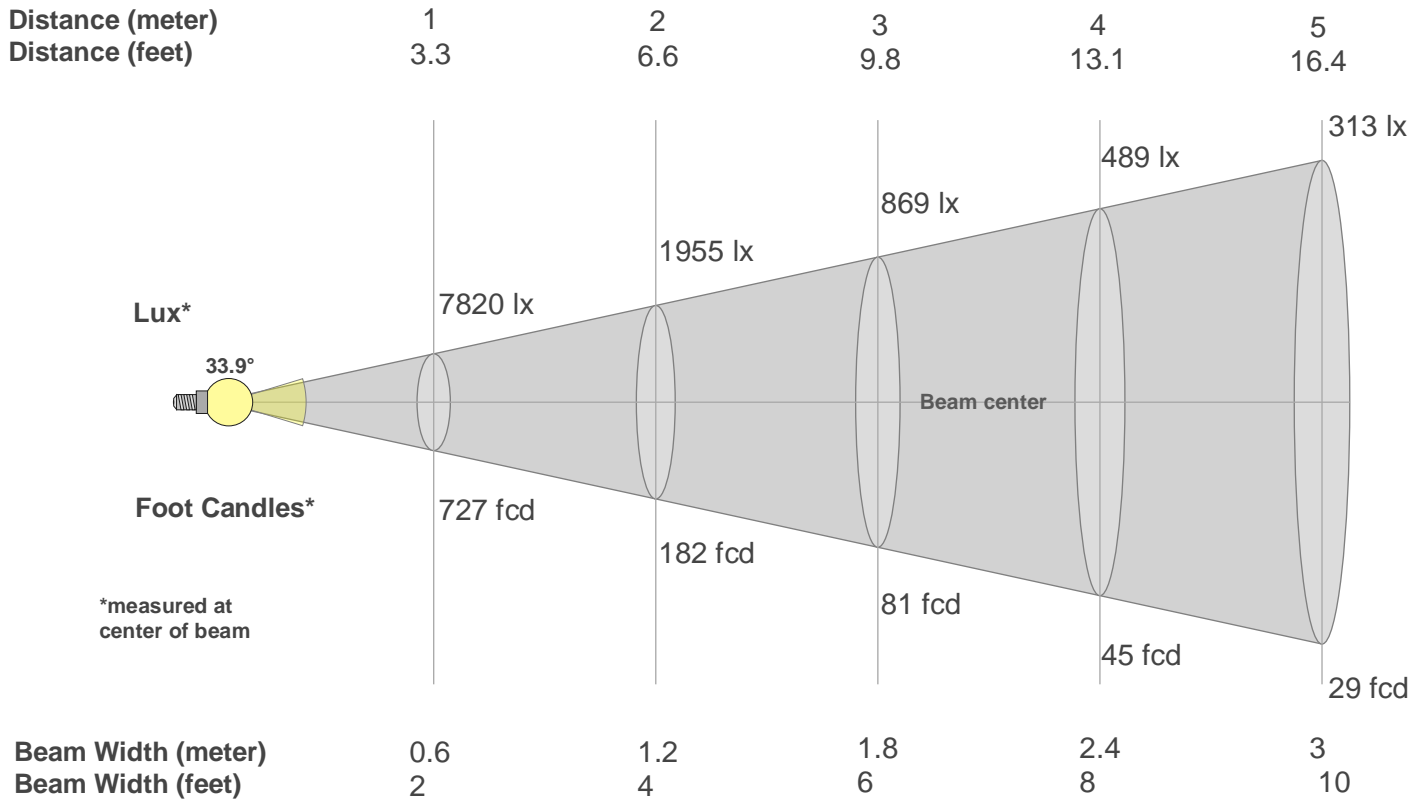
CQS: 65.3



## Color Parameters

Color Temperature	Color Rendering Index	Red Component	Color Fidelity	Color Gamut	Color Quality Scale	Color Coordinate CIE 1931	Color Coordinate CIE 1931	Color Coordinate	Color Coordinate	Color Deviation from Black Body
CCT	CRI	CRI R9	TM30 Rf	TM30 Rg	CQS	x	y	u	v	Δuv
6885 K	68.5	-23.5	62.0	95.7	65.3	0.309	0.312	0.202	0.306	-0.0068

## Beam Details



Beam Intensities from 1-20m

m	1	2	3	4	5	6	7	8	9	10	11	12	13	14	15	16	17	18	19	20
ft	3.3	6.6	9.8	13.1	16.4	19.7	23	26.2	29.5	32.8	36.1	39.4	42.7	45.9	49.2	52.5	55.8	59.1	62.3	65.6
lx	7820	1955	869	489	313	217	160	122	97	78	65	54	46	40	35	31	27	24	22	20
fcd	726.5	181.6	80.7	45.4	29.1	20.2	14.8	11.4	9	7.3	6	5	4.3	3.7	3.2	2.8	2.5	2.2	2	1.8

Intensities in 0° C-plane

0°	2°	4°	6°	8°	10°	12°	14°	16°	18°	20°	22°	24°	26°	28°	30°	32°	34°	36°	38°
7820	7840	7705	7470	7165	6718	6085	5294	4381	3436	2566	1832	1262	840	551	360	247	186	153	86
100%	100%	99%	96%	92%	86%	78%	68%	56%	44%	33%	23%	16%	11%	7%	5%	3%	2%	2%	1%

Intensities in 90° C-plane

0°	2°	4°	6°	8°	10°	12°	14°	16°	18°	20°	22°	24°	26°	28°	30°	32°	34°	36°	38°
7820	7840	7705	7470	7165	6718	6085	5294	4381	3436	2566	1832	1262	840	551	360	247	186	153	86
100%	100%	99%	96%	92%	86%	78%	68%	56%	44%	33%	23%	16%	11%	7%	5%	3%	2%	2%	1%

Intensities in 180° C-plane

0°	2°	4°	6°	8°	10°	12°	14°	16°	18°	20°	22°	24°	26°	28°	30°	32°	34°	36°	38°
7820	7731	7645	7477	7154	6695	6082	5293	4381	3433	2550	1816	1251	840	553	365	248	185	148	83
100%	99%	98%	96%	91%	86%	78%	68%	56%	44%	33%	23%	16%	11%	7%	5%	3%	2%	2%	1%

Intensities in 270° C-plane

0°	2°	4°	6°	8°	10°	12°	14°	16°	18°	20°	22°	24°	26°	28°	30°	32°	34°	36°	38°
7820	7731	7645	7477	7154	6695	6082	5293	4381	3433	2550	1816	1251	840	553	365	248	185	148	83
100%	99%	98%	96%	91%	86%	78%	68%	56%	44%	33%	23%	16%	11%	7%	5%	3%	2%	2%	1%

Beam Angle 50%	Field Angle 10%	Cutoff Angle 2,5%	Intensity Ratio in 120° Cone	Intensity Ratio in 90° Cone
33.9°	52.7°	66.9°	100.0%	99.9%